



April 16, 2024

Green Eagle Railroad Project Environmental Impact Statement

Scoping Meeting

Docket No. FD 36652



Agenda

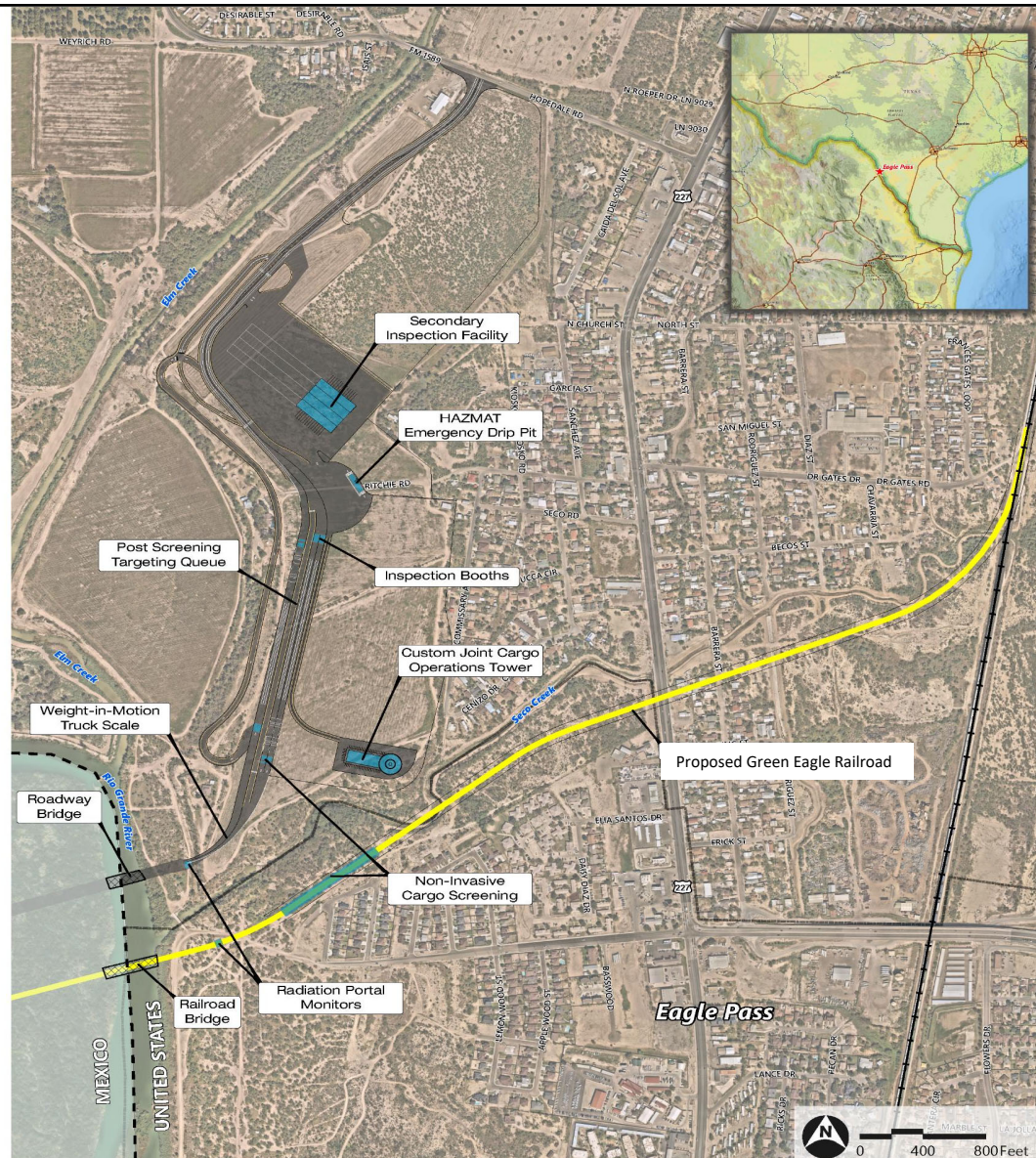
- Overview of Surface Transportation Board
- Proposed Action
- Applicant: Green Eagle Railroad, LLC
- Purpose and Need
- Board Action
- Federal Agencies with Decisions
- Environmental Process
- How to Comment
- How to Stay Engaged
- Comment Session



The Surface Transportation Board

- **Surface Transportation Board (Board)**: Independent federal regulatory agency with jurisdiction over certain surface transportation matters, including new rail line construction.
- **Office of Environmental Analysis (OEA)**: Office within the Board responsible for directing the environmental review process, conducting independent analysis of environmental data, and making environmental recommendations to the Board.

Proposed Action





Applicant: Green Eagle Railroad LLC

- Requested authority to construct and operate the proposed rail line
- Subsidiary of Puerto Verde Holdings (PVH)
- PVH is proposing to construct the Puerto Verde Global Trade Bridge project (PVGTB)
- The proposed rail line is part of the PVGTB



Purpose and Need

Green Eagle Railroad's purpose for constructing and operating the proposed rail line is to develop an economically viable solution to meet the need for border infrastructure improvements at Eagle Pass that increase safety and facilitate binational trade between the United States and Mexico.

According to GER, the proposed rail line would:

- Resolve rail congestion
- Reduce cross border wait times
- Route rail traffic around the urban center of Eagle Pass



Board Action

- The Board will:
 - Review the transportation merits of the proposed Green Eagle Railroad (GER) rail line and the potential environmental impacts.
 - Issue a Final Decision to authorize with appropriate conditions or to deny GER's request for authority to construct and operate the rail line.

Federal Agencies with Decisions



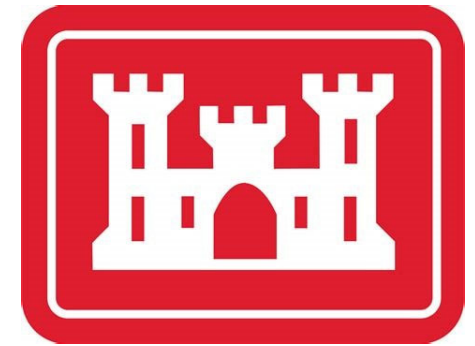
- Authorizes the proposed rail line
- Lead federal agency for the EIS



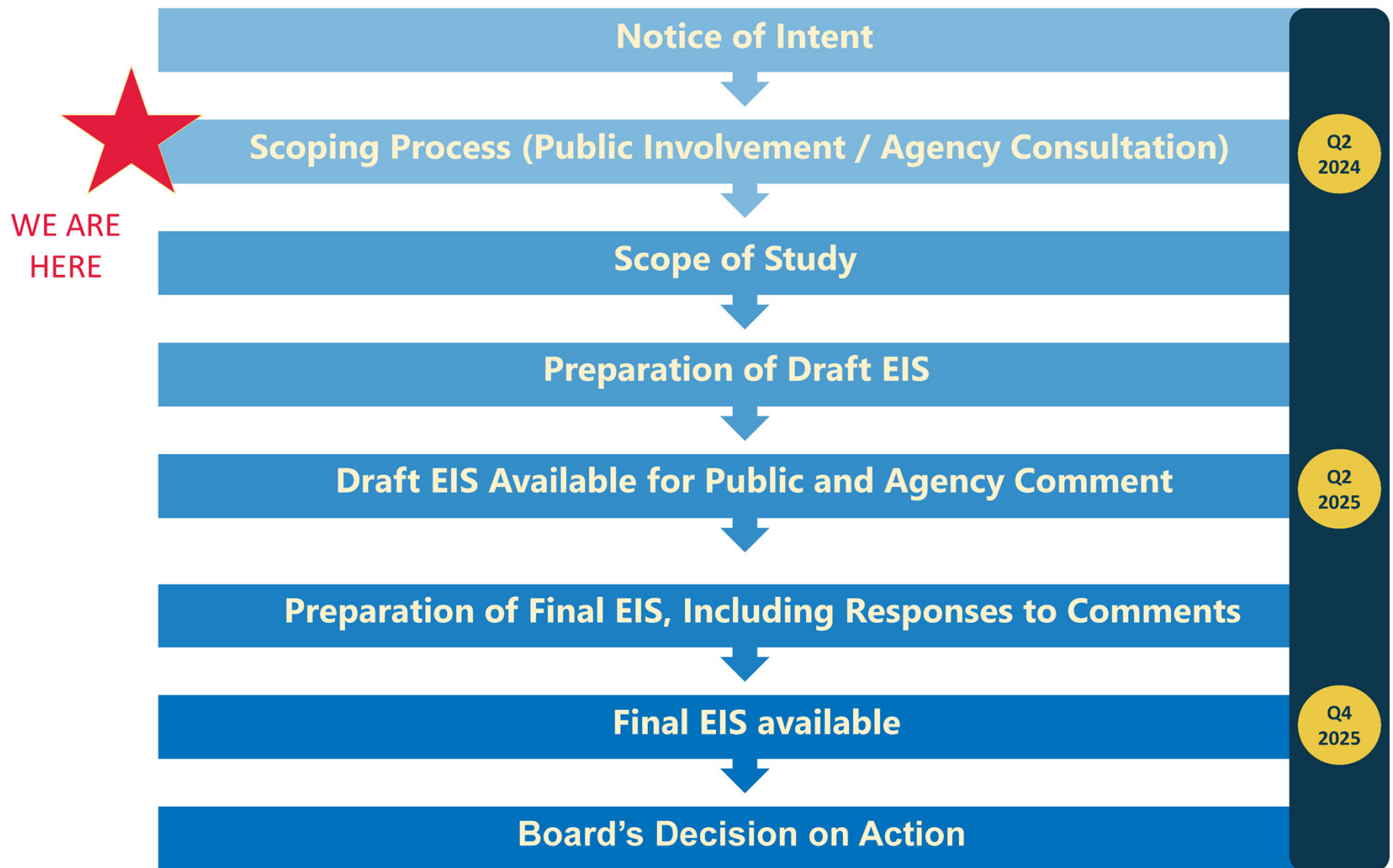
- Permits the proposed rail and road bridges
- Cooperating agency for the EIS



- Authorizes work in the bed and bank of the international stretch of the Rio Grande



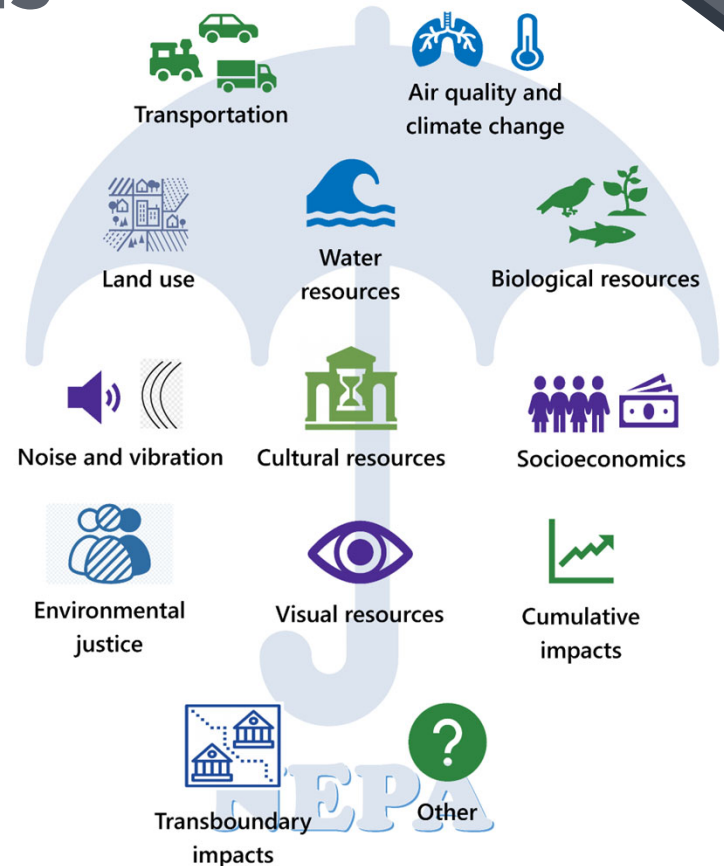
- Permits activities requiring filling wetlands





Potential EIS Impact Areas

- Transportation
- Air quality and climate change
- Land use
- Water resources
- Biological Resources
- Noise and vibration
- Cultural resources
- Socioeconomics
- Environmental justice
- Visual Resources
- Cumulative impacts
- Transboundary impacts (as appropriate)
- Others to be determined through scoping





April 16, 2024

How to Comment

Docket No. FD 36652



How to Submit Comments

- At today's meeting
 - Fill in a comment form
 - Make an oral comment
- Mail a written comment

Andrea Poole
Surface Transportation Board
c/o VHB
1001 G Street NW, Suite 1125, Washington, DC 20001
Attention: Environmental filing, Docket No. FD 36652
- Submit your comment electronically
 - Via STB.gov *E-Filing* page under *Environmental Comments*

All comments must be submitted on or before April 29, 2024



SURFACE TRANSPORTATION BOARD

PROCEEDINGS & ACTIONS

REPORTS & DATA

RESOURCES

NEWS & COMMUNICATIONS

ABOUT STB

SEARCH

[Home](#) » [Proceedings & Actions](#) » [E-Filing](#) » Environmental Comments (E-Filing)

Environmental Comments (E-Filing)

In order for the Office of Environmental Analysis to process your submission, please fill out the following information. An asterisk (*) indicates a required field.

PLEASE NOTE:

- By submitting your document, you consent to have your document shared publicly. If a submitter includes business or personal contact information within that document or in the "Environmental Comments" field, this information will be publicly available on the Board's website.
- Publicly available personal contact information includes the submitter's name, city, and state. For any issues regarding e-filing of environmental comments, please call (202) 245-0350.
- We encourage you to provide business contact information where possible.

* Do you know the related docket number(s) for this environmental comment?

☐ Yes ☐ No

* Project Name and/or Location:

* Attention of:

OEA/Unknown

* Submitter:

Organization (if applicable):

* Affiliation:

Self/Individual

* Address Line 1:



SURFACE TRANSPORTATION BOARD

PROCEEDINGS & ACTIONS

REPORTS & DATA

RESOURCES

NEWS & COMMUNICATIONS

ABOUT STB

SEARCH

[Home](#) » [Proceedings & Actions](#) » [E-Filing](#) » Environmental Comments (E-Filing)

Environmental Comments (E-Filing)

In order for the Office of Environmental Analysis to process your submission, please fill out the following information. An asterisk (*) indicates a required field.

PLEASE NOTE:

- By submitting your document, you consent to have your document shared publicly. If a submitter includes business or personal contact information within that document or in the "Environmental Comments" field, this information will be publicly available on the Board's website.
- Publicly available personal contact information includes the submitter's name, city, and state. For any issues regarding e-filing of environmental comments, please call (202) 245-0350.
- We encourage you to provide business contact information where possible.

* Do you know the related docket number(s) for this environmental comment?

☐ Yes ☐ No

* Project Name and/or Location:

* Attention of:

OEA/Unknown

* Submitter:

Organization (if applicable):

* Affiliation:

Self/Individual

* Address Line 1:



Proposed Green Eagle Railroad Project in Eagle Pass, Texas

Environmental Impact Statement

[Home](#) [Proposed Action](#) [Schedule](#) [Public Involvement](#) [Documents](#) [Maps](#)

MEETING DATES ANNOUNCED

The Surface Transportation Board's Office of Environmental Analysis will hold in-person and online public scoping meetings on April 16 and 23, 2024, respectively. For more information and to pre-register to speak at the public meetings, visit the Public Involvement webpage.

[View Public Involvement webpage »](#)

NOTICE OF INTENT PUBLISHED

OEA issued a Notice of Intent (NOI) to prepare an Environmental Impact Statement in the Federal Register on March 29, 2024.

[View Notice of Intent »](#)

Welcome to the website for the Proposed Green Eagle Railroad Project in Eagle Pass, Texas.

Overview

Green Eagle Railroad, LLC (GER), a subsidiary of Puerto Verde Holdings (PVH), filed a petition with the Surface Transportation Board (Board) for authority to construct and operate approximately 1.3 miles of new freight rail line (the Line) in Eagle Pass, Texas. The Line would be part of a larger project by PVH, the Puerto Verde Global Trade Bridge (PVGTB) Project, consisting of a new trade corridor for freight rail and commercial motor vehicles between Piedras Negras, Coahuila, Mexico, and Eagle Pass. Only the Line is under the Board's jurisdiction.

The Board's Office of Environmental Analysis (OEA) determined that the construction and operation of the Line has the potential to result in significant environmental impacts. Therefore, OEA is preparing an Environmental Impact Statement (EIS) in compliance with the National Environmental Policy Act (NEPA).

What's an EIS?

NEPA requires Federal agencies to prepare an EIS for any proposed major federal action that would significantly affect the quality of the human environment. An EIS describes the potential impacts of the proposed federal action on the environment and identifies measures to avoid, minimize, or mitigate these impacts.

The federal action here is the Board's decision to authorize with appropriate conditions or to deny GER's petition for authority to construct and operate the Line. Only the Line is under the jurisdiction of the Board. Parts of the PVGTB Project other than the Line will be considered, as appropriate, when evaluating the environmental impacts of the Line in the EIS.

Separately from the Board's final decision on GER's petition, the PVGTB Project would require permits from the United States (U.S.) Coast Guard and the U.S. Army Corps of Engineers. The U.S. Coast Guard will participate as a Cooperating Agency in the EIS process. A cooperating agency is a Federal agency that has jurisdiction by law or special expertise with respect to any environmental impact involved in a proposed project.

[Learn about the Proposed Action »](#)

[Learn about the EIS process for the Line »](#)

[Learn how you can participate in the EIS process »](#)

Mailing List Sign-up Form

Use this form to sign-up to receive updates.

Name *

First Name

Last Name

E-mail *

example@example.com

Please verify that you are human *

☐ I'm not a robot

Submit



How to Stay Engaged

- Stay Informed through the following means
 - Project Website: www.GreenEagleRREIS.com
 - Board website: www.stb.gov
 - Join Project Email List
- Contact Us for questions or information
 - By email: Contact@GreenEagleRREIS.com
 - Information Line: (888) 319-2337



April 16, 2024

Thank you

Docket No. FD 36652



April 16, 2024

All speakers

- You will have 3 minutes to speak
- Please clearly state your name
- Comments will be recorded
- Will be part of Scope of Study
- Posted to website

Comment Session

Docket No. FD 36652